

SheetSpotHiRes_1v4 PDF export settings for Adobe InDesign 4 and up (CS2 and up)

Export Adobe PDF

Adobe PDF Preset: SheetSpotHiRes_1v4_IND4

Standard: PDF/X-1a:2001 Compatibility: Acrobat 4 (PDF 1.3)

General

Description: Ghent PDF Workgroup - 2008 Specifications version 4 / (PDF/X-1a:2001 compliant)

Pages

☒ All

☐ Range: 1

☐ Spreads

Options

☐ Embed Page Thumbnails ☒ View PDF after Exporting

☐ Optimise for Fast Web View ☐ Create Acrobat Layers

☐ Create Tagged PDF

Export Layers: Visible & Printable Layers

Include

☐ Bookmarks ☐ Non-Printing Objects

☐ Hyperlinks ☐ Interactive Elements

☐ Visible Guides and Baseline Grids Multimedia: Use Object Settings

Save Preset... Export Cancel

Export Adobe PDF

Adobe PDF Preset: SheetSpotHiRes_1v4_IND4

Standard: PDF/X-1a:2001 Compatibility: Acrobat 4 (PDF 1.3)

Compression

Colour Images

Bicubic Downsampling to: 300 pixels per inch

for images above: 450 pixels per inch

Compression: Automatic (JPEG) Tile Size: 128

Image Quality: Maximum

Greyscale Images

Bicubic Downsampling to: 300 pixels per inch

for images above: 450 pixels per inch

Compression: Automatic (JPEG) Tile Size: 128

Image Quality: Maximum

Monochrome Images

Bicubic Downsampling to: 2400 pixels per inch

for images above: 3600 pixels per inch

Compression: CCITT Group 4

☒ Compress Text and Line Art ☒ Crop Image Data to Frames

Save Preset... Export Cancel

Export Adobe PDF

Adobe PDF Preset: SheetSpotHiRes_1v4_IND4

Standard: PDF/X-1a:2001 Compatibility: Acrobat 4 (PDF 1.3)

Marks and Bleeds

Marks

☒ All Printer's Marks Type: Default

☒ Crop Marks Weight: 0.25 pt

☐ Bleed Marks Offset: 5 mm

☒ Registration Marks

☐ Colour Bars

☒ Page Information

Bleed and Slug

☐ Use Document Bleed Settings

Bleed:

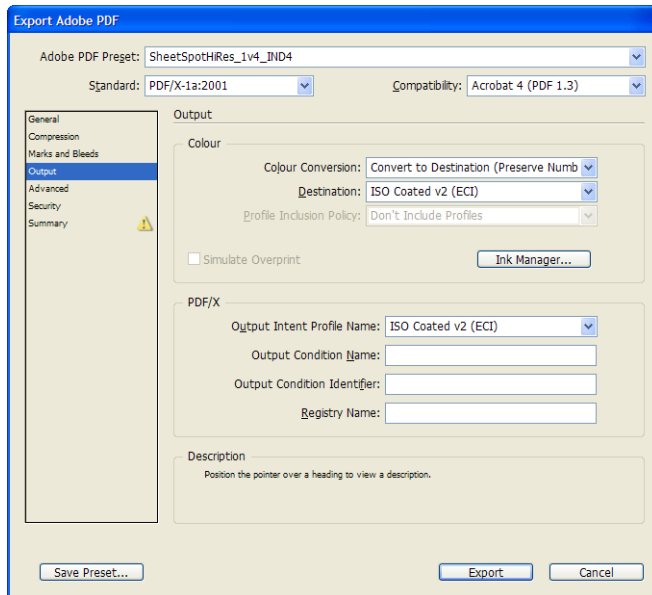
Top: 5 mm Left: 5 mm

Bottom: 5 mm Right: 5 mm

☐ Include Slug Area

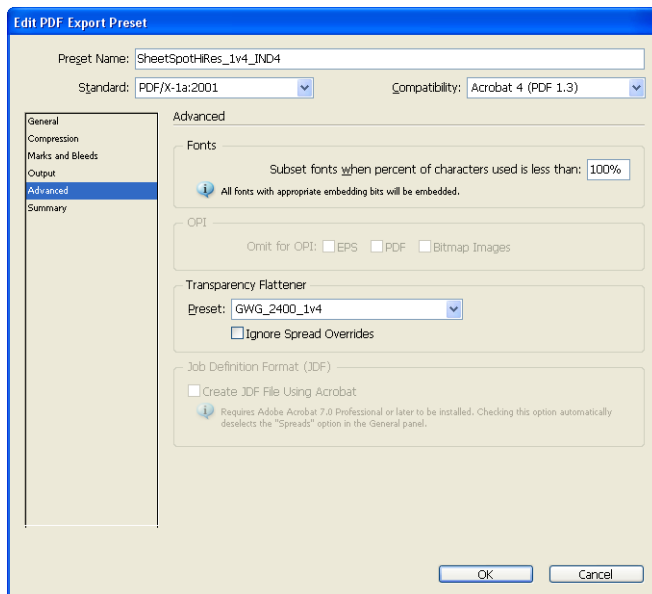
Save Preset... Export Cancel

SheetSpotHiRes_1v4 PDF export settings for Adobe InDesign 4 and up (CS2 and up)



In this field it is very important to select the proper colour conversion settings yourself:

- please check with your output provider which ICC profile is appropriate, or select the ICC profile that was used for converting images to CMYK in PhotoShop or InDesign.
 - For SheetSpotHiRes_1v4, we recommend you to use the ISO Coated_v2_eci ICC profile
- Colours in your document will change if:
- objects in RGB colour space with or without ICC profiles are used in the document
 - CMYK objects with different ICC profiles are placed in the document



The GWG_2400_1v4 Transparency Flattening settings are set under Edit>Transparency Flattening Presets>New... as below:

